



Confederation of Indian Industry



CII ITC Centre of Excellence
for Sustainable Development

Natural Capital

Rethinking growth beyond GDP

21 October 2015
Lille, France



Biodiversity loss is alarming



100 to 1,000X pre-human levels

Pimm, Stuart L., et al. "The future of biodiversity." Science 269 (1995): 347-347

© Confederation of Indian Industry

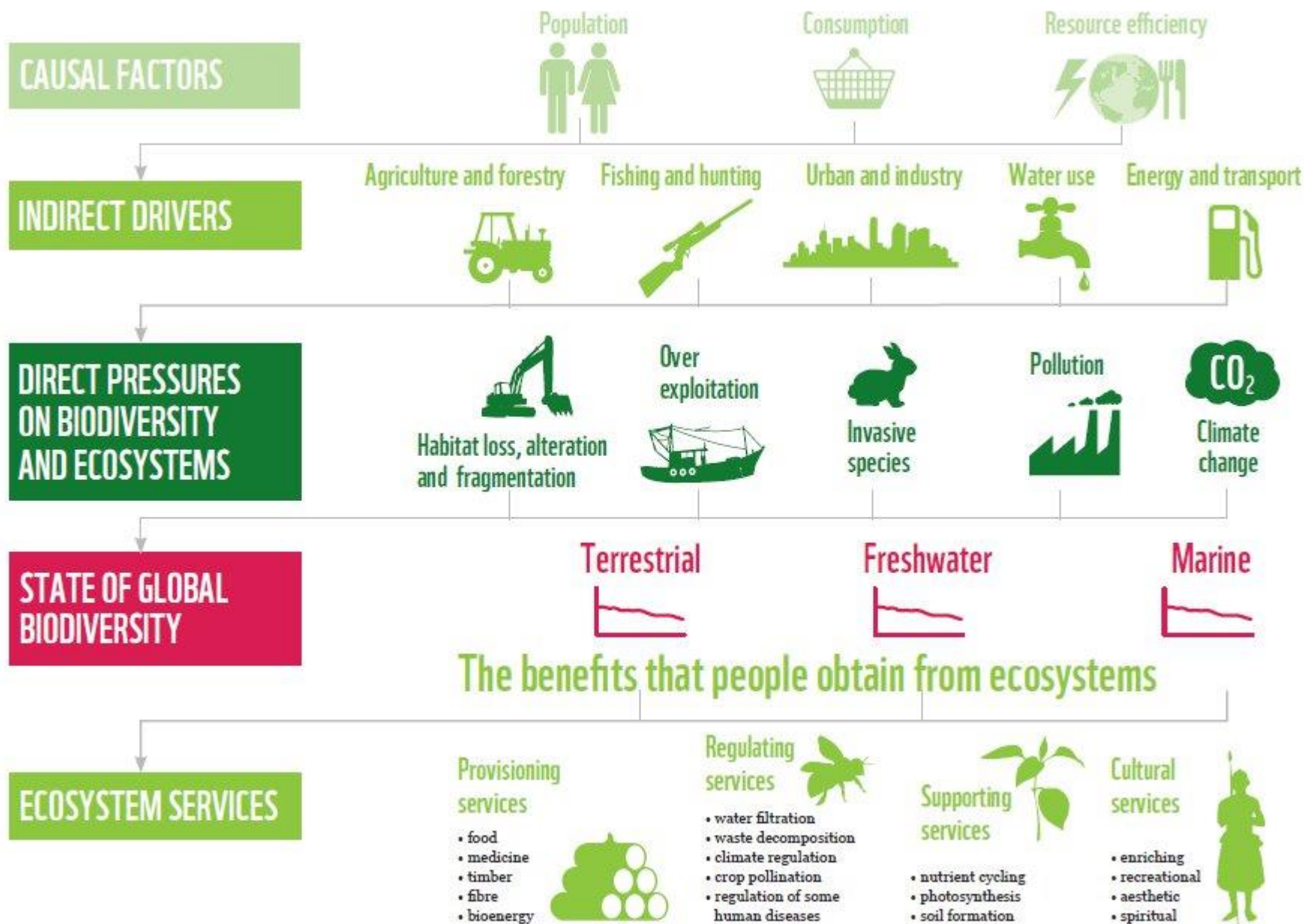
Range of methods to slow or stop damage



explicit value on biodiversity & ecosystem services



performing triage on the most valuable species



World trade based on biological products or processes



40%

Front-running business league in conservation & sustainable use of biodiversity





Advocacy

Awareness and knowledge

Professional consultation & training

Recognition

10-point IBBI Declaration

1

Mapping biodiversity interfaces with business operations

2

Enhancing awareness on biodiversity within the organization

3

Considering the impacts of business decisions on biodiversity

4

Setting objectives and targets for biodiversity management

5

Designating an individual within the organization as biodiversity champion

6

Assessing biodiversity risks and opportunities

7

Including the applicable biodiversity aspects in the environmental management systems

8

Encouraging relevant stakeholders to support better biodiversity management

9

Engaging in policy advocacy and dialogue with Government, NGOs and academia on biodiversity concerns

10

Initiating the valuation of relevant biodiversity and eco-system services

The front-runners - IBBI signatories

